



Paris, July 27th, 2017

LET'S NOT OVER EMPHASIZE CO₂e/GHG EMISSIONS GENERATED BY MEMBERS OF THE EUROPEAN PARLIAMENT TRAVELS!

A new angle of attack has been found by the proponents of a single Brussels headquarter for the European Parliament: the CO₂e emissions generated by constant travels to Strasbourg!

In addition to recalling the classic and historical battle between these Belgian and Alsatian clans, this debate raises a core environmental issue, right at the heart of european policy. However the figures announced, in particular by Swedish deputy **Anna-Maria Corazza**, deserve a serious revision! With too much exaggeration, one can ruin the cause ...

TK'Blue Agency, the only recognized International Agency for measuring eco-responsible transport performance, proposes to objectify the debate. Its **CO₂e / Greenhouse Gases (GHG) calculator**, audited by Bureau Veritas, allows **calculation and on-line visualisation of the real impact of the different choices of transport modes** and to advocate reasoned solutions.

TK'Blue can thus give precise information on the environmental impacts of the Strasbourg-Brussels travels of the 751 european MPs.

Hypothesis adopted for a total of 1502 people (751 MPs with each an assistant) traveling twelve times yearly on the round trip Brussels / Strasbourg:

▪ **By Air**

The aviation CO₂e emission calculator of the Directorate General of Civil Aviation makes it possible to estimate CO₂e emissions per equivalent passenger for a destination set for France. This calculator indicates that on the Strasbourg-Brussels route, a commercial airplane emits an average of 317 kgCO₂e / passenger per round trip.

▪ **By Rail (special train Brussels-Paris (CDG)-Strasbourg)**

In the absence of the essential data needed for calculating CO₂e emissions (train energy consumption, average number of passengers carried), the level 1 values of French Decree 2011-1336 may be used: a high-speed electric train emits 3.71 gCO₂e / passager.km.

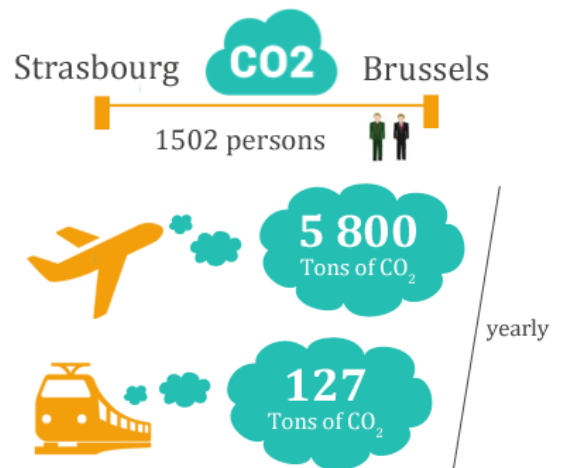
Results on 1 year:

▪ **100% by Air:**

CO₂ emissions would read **5,800 tons**.

▪ **100% by Rail:**

The direct link train line would amount to **127 tons of CO₂**.



So we stand very far from the 19,000 tons figures of CO₂e announced by the deputy, even though no one would take the train to Strasbourg, which is of course, really not the case!

TK'Blue Agency is a trusted and unique third party. Its **methodology is transparent and validated by an international scientific council** of 14 experts. The Agency shall objectively assess the impacts and help identify sustainable solutions.

ABOUT TK'BLUE

TK'Blue is a labelling and rating Agency of Transport organized as a service platform. It measures, rates and values the eco-responsible performance of each actor - Carriers & Contractors alike - in compliance with the legislative and regulatory requirements on CO₂ emissions and "CSR", both at national and European level.

Its European governance, composed of more than seventy representatives belonging to the global supply chain actor's community, ensures its legitimacy, credibility, evolution and guarantees its long-term independence.

The platform can be connected via "SaaS" mode via the Cloud, and access is free of charge for road carriers.

Find out more: www.tkblueagency.eu

PRESS CONTACT :

Marcia Assuncao – Communication Manager
marcia.assuncao@tkblueagency.eu

+ 33 (1) 71 39 80 71
+ 33 (6) 30 04 97 60